



Leonard Industrial Co., Limited

Website: www.Lndwaterbottling.com

Address: RM1918, B Buliding, Wanda Plaza, Jiangmen City, Guangdong, China. (Jiangmen Office)

RM 1902 EASEY COMM BLDG 253-261 HENNESSY ROAD WANCHAI, HK (Hongkong Office)

WhatsApp:+86-17864297827 (Ms. WendyZhu)

Wechat: wendy8827 (Ms. WendyZhu)

Tel: +86-17864297827 Fax: +86 750 3723909

Concentrated Juice Production Line

(capacity: 6000 bottles/hour based on 500ml)

I. Quotation List:

Equipment	Model	Qty	Unit Price (USD)	Total Price (USD)	Specification
Part One: Water Treatment system					
RO water purification system	LNRO-4000 L/H	1	<u>11,000.00</u>	<u>11,000.00</u>	1) SS304 Pretreatment Filters 2) 5T SS304 Water Tank 3) USA DOW FILMTEC RO Membranes 4) Mitsubishi PLC Control 4) UV Sterilizer 5) Ozone post treatment system
Part Two: Juice Making System					
Sugar Dissolve Tank		2	<u>1,700.00</u>	<u>3,400.00</u>	500L
Syrup Pump		1	<u>450.00</u>	<u>450.00</u>	
Thick juice filter		1	<u>710.00</u>	<u>710.00</u>	
Plate Heat Exchanger	HLD-12	1	<u>2,100.00</u>	<u>2,100.00</u>	3T/H
Cooling & Heating Tank	LRC-1000	2	<u>4,000.00</u>	<u>8,000.00</u>	2000L
Beverage Pump		4	<u>200.00</u>	<u>800.00</u>	

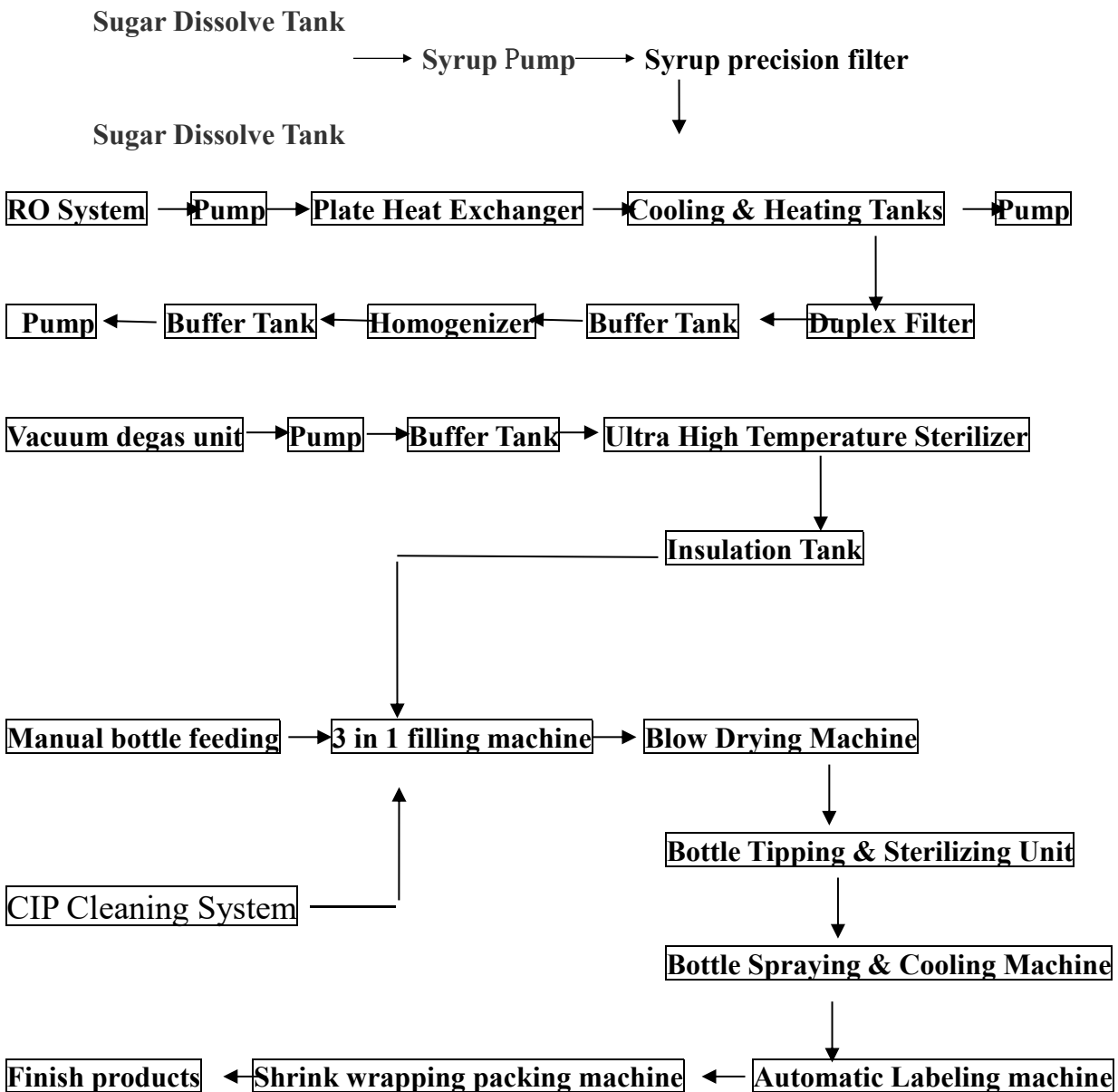
Duplex Filtering Unit	ZPR-2	1	<u>700.00</u>	<u>700.00</u>	3000L/H
Buffer Tank	CG-2	3	<u>1,950.00</u>	<u>5,850.00</u>	2000L
Homogenizer	3-25	1	<u>8,500.00</u>	<u>8,500.00</u>	3T/H
Vacuum degas unit	TQ-2	1	<u>4,700.00</u>	<u>4,700.00</u>	3T/H
Ultra High Temperature Sterilizer	SGS-2000	1	<u>6,800.00</u>	<u>6,800.00</u>	3000L/H
Insulation Tank	BW-2000	1	<u>2,600.00</u>	<u>2,600.00</u>	2000L
Semi-Auto CIP Washing System	CIP-1000	1	<u>6,000.00</u>	<u>6,000.00</u>	
Sub Total Price	61,610.00				
Part Three: Bottle Filling Packing Equipment					
Automatic 3 in 1 Filling Machine(Heat filling type)	RCGF 18-18-6	1	<u>23,000.00</u>	<u>23,000.00</u>	3m Air conveyer + 3m belt conveyer Automatic bet type cap loading unit Automatic reflux system Mitsubishi PLC + Transducer control
Bottle Tipping & Sterilizing Unit	DS-1	6	<u>1,000.00</u>	<u>6,000.00</u>	6meters system
Bottle Spraying & Cooling Machine	PL-1	8	<u>2,000.00</u>	<u>16,000.00</u>	8meters system
Blow Drying Machine	HGJ	1	<u>2,500.00</u>	<u>2,500.00</u>	
Laser printer		1	<u>5,000.00</u>	<u>5,000.00</u>	30W laser unit Red light positioning system
Automatic Bottle Sleeve Labeling Machine		1	<u>12,500.00</u>	<u>12,500.00</u>	Fully automatic sleeve labeling unit 7m conveyer 18kw steam generator Mitsubishi PLC+ Transducer
Automatic Shrink-Wrapping Packing Machine	XY-A400	1	<u>8,500.00</u>	<u>8,500.00</u>	Film cutting & wrapping machine Heat Shrinking Machine

					2.5m conveyer with bottle separating unit
Sub Total		73,500.00			
All Total		<u>135,110.00</u>		FOB Shanghai	

Remarks:

- 1) Payment terms: 30% costs paid as deposits, 70% costs should be paid prior to shipment.
- 2) Delivery: With 60days from the day receiving the deposits and confirm the bottle design.
- 3) Quality warranty: One year.
- 4) Based spare parts for free and English version manual & documents are available.
- 5) The related pictures for reference only, it should be subject the real one.

Main Production Process & Related Machineries:



II. Specification

Part One: 4000L/H R.O. Water Purification System

1. Design basis and treated water standard:

1. Design Basis

1.1 Produced water's application: Bottle drinking water

1.2 The capacity of produced water: 4000L /H

1.3 System Configuration: Pretreatment + One Stage Reverse Osmosis Desalination System.

1.4 Designed recovery: 50-65%.

1.5 Rejection rate: $\geq 97\%$

1.6 Voltage: 3 phases, 380V, 50Hz; Power: 7.5 KW (Can be customized at your country's voltage, please tell us about it when ordering)

2. System requirements:

2.1 Inlet pipelines: inlet pipe connected with the raw water tank entrance.

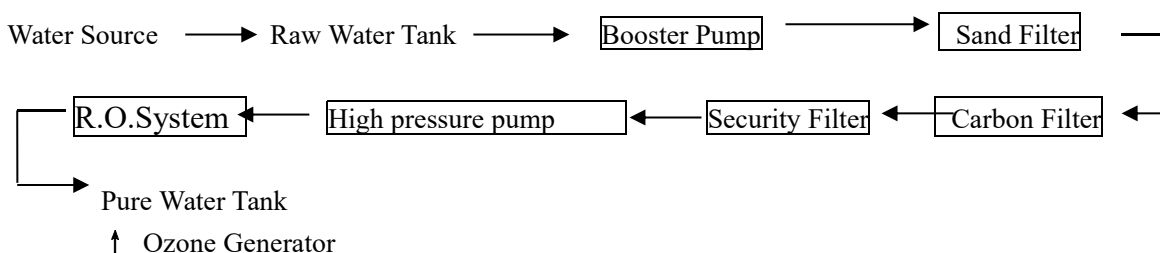
2.2 Cable: According to the calculated capacity of electric power, the user should send it on the control cabinet.

2.3 Outlet water pipelines: From pure water tank to the pure water using point.

2.4 Concentrated Water Treatment: Discharge to the wastewater pool (user considered).

2.5 Water temperature: 5-35°C

3. Process:



4. Process Description:

The process includes pretreatment, reverse osmosis system, and post treatment (Ozone generator)

1) Raw water pretreatment part:

Raw water contains many impurities, such as suspended solids, colloidal, organic and inorganic. To ensure Reverse Osmosis Desalination System at normal operation, the suspended solids, colloids, organic matters must be removed in advance, so that feed water to reverse osmosis system meets the requirement. So, the

pretreatment part should be equipped. The pretreatment part includes: Mechanical Filter, Activated Carbon Filter and Security Filter.

(1) Mechanical filter:

Reverse osmosis equipment has the high requirement to the turbidity of the feed water, especially reverse osmosis water's pollution index value requests less than 4 SDI and turbidity less than 1NTU. Multi-media filter filled with several specification quartz sand, which remove suspended solids, colloid from raw water.

(2) Activated Carbon Filter:

Reverse osmosis equipment requests residual chlorine content be less than 0.1mg / L, so used activated carbon filter removing chlorine from raw water avoiding reverse osmosis membrane getting contamination.

Meanwhile, it can adsorb organic matter in raw water. Activated carbon filter inside filled with the coconut shell refined activated carbon , for adsorbing the chlorine , organic matter, some pigments and harmful substances, reducing the chemical oxygen demand(COD).

Activated carbon is widely used in life water, the food industry, chemical and other industries. Due to large specific surface area and the surface covered with lots of micropores, therefore, activated carbon with high adsorption capacity.

(3) Security Filter:

Security filters are micro-filtration equipment, playing the insurance role in the pretreatment, to prevent the particles into the water pump and reverse osmosis system.

2) Reverse osmosis desalination parts:

Water reverse osmosis unit can remove most of inorganic salts, particles, bacteria, viruses, heavy metals, and other soluble substances.

The rejection rate can reach 98%.It is simple, low energy consumption, non-pollution, etc, so, it is widely used for producing pure water.

5. Features of Electric Control:

1)Inlet low pressure protection switch of high-pressure pump:

Linkage with the high-pressure pump, pressure below the set value, high-pressure pump will stop running.

2) The membrane inlet high pressure protection switch:

Linkage with the high-pressure pump, if operated high pressure too high, the membrane will be easy get blocked, even penetrated. When the membrane system operating pressure exceeds the setting value, the high-pressure pump will stop running.

3) The reverse osmosis unit equipped with low pressure automatic flush valve:

Linkage with the high-pressure pump, set by the time relay, when the reverse osmosis unit start to work, the system auto startup, washing the film surface with large-flow, so the sediments on membrane surface washed away in time, to ensure the normal operation of membrane.

4) Raw water tank / pure water tank high and low level control switch

The raw water pump / high pressure pump linkage, the raw water tank at low level, the raw pump automatic shutdown for protection, when pure water tank full, high-pressure pump to stop.

6. Main Components List:

Basic Configuration	Item	Description
Pretreatment part	Feed pump	CNP CDL8-30 380V, 1.1kw
	Sand filter	Φ700×2000 (filter 700kg) SS304/FRP
	Active Carbon filter	Φ700×2000 (filter 225kg) SS304/FRP
	Micron filter	40"×5 micron filter
RO Part	Pressure pump	CNP CDL8-160 380V, 5.5kw
	RO membrane	USA DOW FILMTEC BW30-365 x 4pcs
	Membrane vessel	8040*2M 2 SETS
Piping and controlling valve	Pressure controller	P6E
	Piping and valves	U-PVC piping & Valves
	Control system & Indicator	Water level control, Pump protecting, Automatic electric valve control, Misubishi PLC System
Other fittings of machine	Pressure gage	1.0MPa, 2.5Mpa. 5pcs in total
	Conductivity of the table	CM230 X 2sets
	Main frame	Stainless steel 1set
	motorized valve	DN32
	Pipeline flow meter	35GPM 2sets

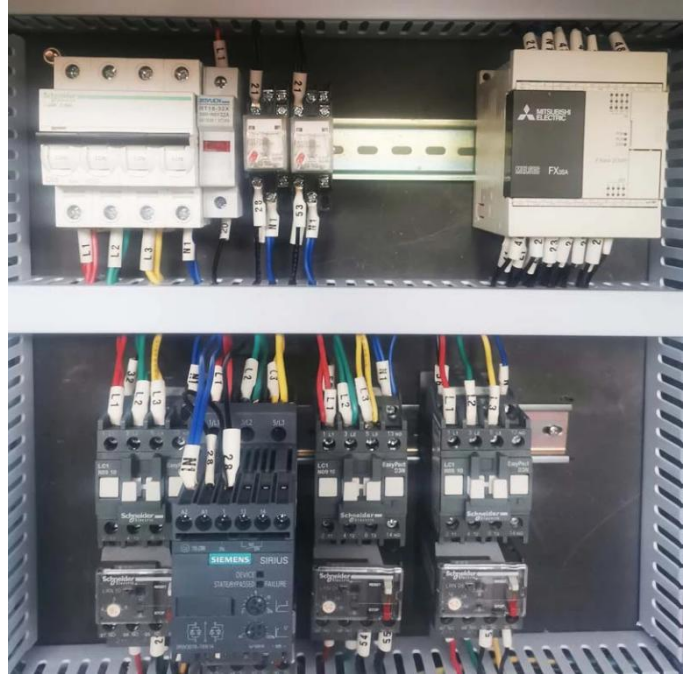
7. Picture



8000L Aspetic Pure Water Tank



Ultraviolet sterilization



Control system



Part Two: Juice Proess System




Name	Specification	Qty	Picture
<p>Sugar Dissolve Tank</p>	<p>Electric heating sugar pan Electric heat pipe: 40KW, Processing capacity: 500L Installation dimensions: high Φ 1000 x 1600 Stirring motor: 0.55KW Material: 304</p>	<p>2</p>	

<p>Thick juice filter</p>	<p>Syrup filter: Model number: YTL - 300 Power: 0.37 kw Surface size: 380x500mm</p>	<p>1</p>	
<p>Plate Heat Exchanger</p>	<p>Model: HCD-8 Heat exchange area: 8M2 Working pressure: 1.0Mpa Design temperature: <120° Weight: 70kg Dimension: 710x320x900mm</p>	<p>1</p>	
<p>Cooling & Heating Tank</p>	<p>Capacity: 1000L Dimension: Dia 1200*2350mm Material: SUS304 Thickness:1.5mm Weight: 280 kg Motor capacity: 0.75kw For adding and blending additives, also with steam heating and cooling functions.</p>	<p>2</p>	

<p>Beverage Pump</p>	<p>Model: RV2-20 Power Capacity: 0.75kw/0.37kw</p>	<p>2</p>	
<p>Duplex Filtering Unit</p>	<p>Capacity: 2000L/H Dimension: 800*300*800 Material: SUS304 Weight: 70 kg For juice, soymilk filtering</p>	<p>1</p>	
<p>Homogenizer</p>	<p>Capacity: 3T/H Blending capacity:30kw Size:1150×950×1330mm Materials: SS304</p>	<p>1</p>	
<p>Vacuum degas unit</p>	<p>Function: Remove the gas in the juice and extend the juice warranty period. Capacity: 3T/H Power capacity: 7.5kw Size: 1000x900x2000mm</p>		

<p>Buffer Tank</p>	<p>Model: CG-1 Materials: SUS304 Capacity: 1000L Dimension: Φ1000×2200mm Using for water flow adjustment</p>	<p>3</p>	
<p>Ultra High Temperature Sterilizer</p>	<p>Capacity: 3200L/H Dimension : Φ1000×1250×1860 mm Weight: 650kg Material: SUS304 Power: 4kw High temperature sterilizer for juice beverage with 3-5seconds' duration</p>	<p>1</p>	
<p>Insulation Tank</p>	<p>Capacity: 2000L Dimension: Φ1400X 2200mm Material: SUS304 Weight: 200KG</p>	<p>1</p>	

CIP Cleaning System	Capacity: 3000L/H	1	
	Operation pressure:		
	0.3-0.7mpa		
	Operation temperature:		
	60-138°		
Centrifugal pump flow rate:			
10T/H			
Centrifugal pump lift: 35M			
Material: SUS304			
Power: 2.2kw			

Part Three: Bottle Filling Packing Line

RCGF18-18-6 3 in 1 Washing, Filling and Capping Machine



RCGF18-18-6 PET bottle Washing / filling / capping machine is a three-in-one combination of our advanced technology of high temperature filling technique, and it is the application of independent

research and development, it will be the same with pure water and mineral water advanced bottling models. This machine adopts conveying way for clip bottles' lips, only need to replace very few parts, it can be applied to a variety of bottle type, smooth delivery. Filling method is Atmospheric pressure heat filling.

★The main frame adopts structural steel, 304 stainless steel exterior layer, 304 stainless steel frame, round steel adjustable feet.

★Conveying system adopts star wheel, smooth transmission, stainless steel chain, it will be a smaller deformation.

★Number of washing clips is 18, 304 stainless steel chassis wash pipes are heat-resistant.

★Number of filling valve is 18, and parts contacted with product are 304L stainless steel. Inner surface is dealt with polishing. There is stainless steel returning tube, no dead space.

★Number of capping head is 6, screw head using magnetic torque device to facilitate torque adjustment, it can be set the size of the first torque of capping in accordance with the actual production needs.

Power system

★Main Motor and Gearbox with frequency controller, transmission for sports bodies are gears, run smooth, all-round star bottle components are engineering plastics, with security agencies.

★With PLC, transducer, relay, photoelectric switch, imported sensor switch relay components, touch screen operation panel, pneumatic components imported.

Technical Parameter

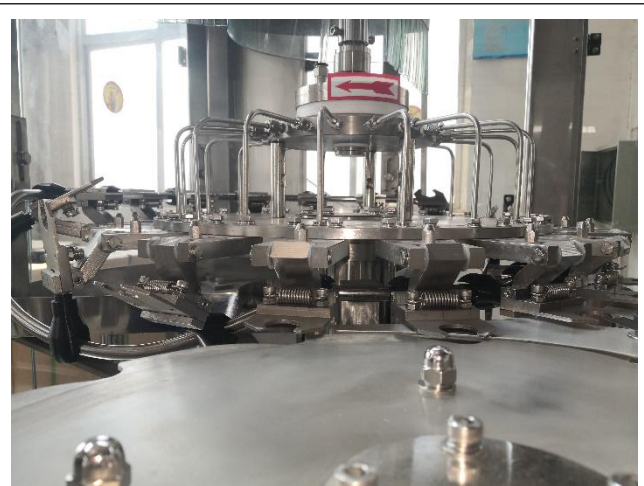
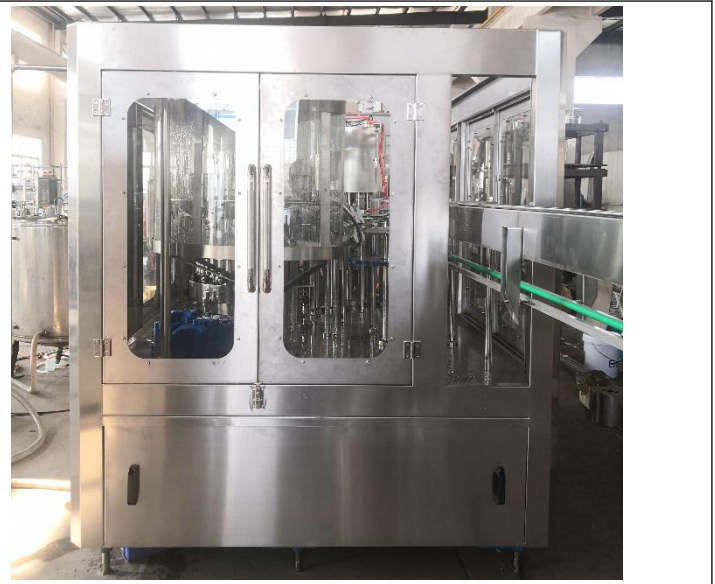
1. Model: RCGF8-18-6
2. Overall dimension (mm) : 2100*1500*2200
3. Production capacity: 4000-6000 b/h (500ml)
4. Suitable bottle sizes: 300ml-1500ml
5. Pressure of air source: 0.6Mpa
6. Used air: 0.3 m³ 3/min
7. Water pressure of washing bottles: 0.2-0.25Mpa
8. Used water of washing bottles: 1 T/h (Max. it can be adjusted)
9. Filling mode: Atmospheric pressure filling
10. Total capacity of motor: 4.5Kw
11. Rating pressure: 380V50Hz
12. Weight: 4000kg
13. The machine includes: 2M air conveying system in front, 3M conveying system for bottles out in back, cap elevator.

Main Component list:

Item Name	Model& Specification	Qty	Origin
Main Motor	Y90L-4 2.2kw	1	Suzhou
Bottle Washing Filling Pumps	0.37KW	2	CNP (Nangfang)
PLC	FX1S-20MR	1	Mitsubishi
Transducer	FR-D740E-2.2K	1	Mitsubishi

Touch Screen	MT6070IH2	1	Winview
Approach switch	PR18-5DN	2	AUTONICS
Photoelectric switch	E3F-DS30C1	2	AUTONICS
AC Contactor	LC1-D0910/AC220V	6	DELIXI
Thermal relay	JS1D-25	6	DELIXI

Equipment Picture:



Washing Unit



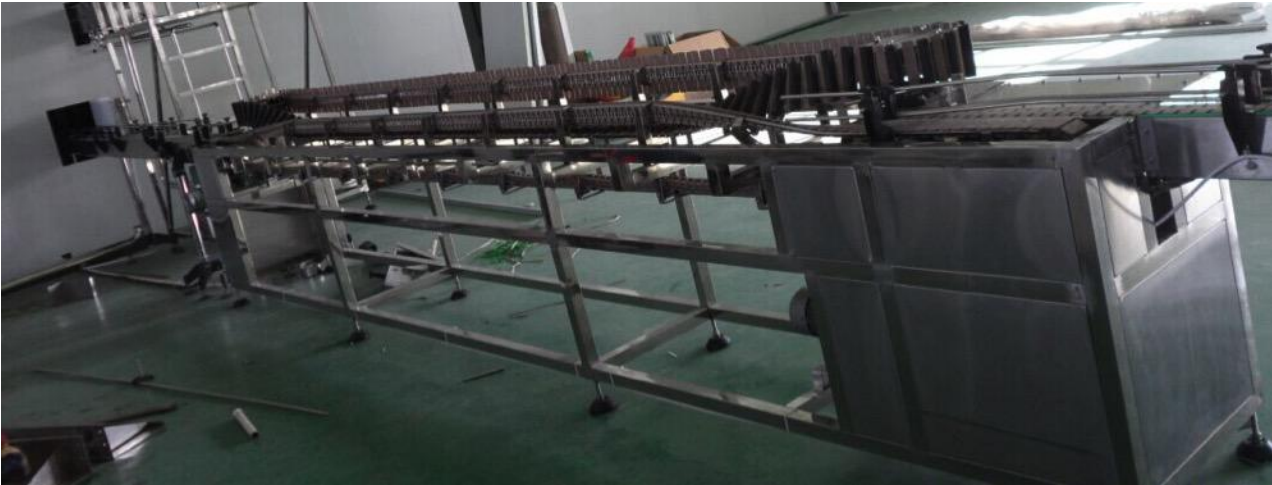
Capping Head



Heat Filling Nozzle for juice

Bottle Tipping & Sterilizing Unit





Function: Sterilizing for bottled beverage (use 85degree liquid inside the bottle)

Model: DS-1

Capacity: 4000-6000bph

Electric power: 1.51kw

Dimension: 6000*600*1300mm

Weight: 800kg

Bottle Spraying & Cooling Machine



Function: Cooling the bottles after heat filling

Capacity: 4000-6000bph

Dimension: 8000*1520*1600mm

Weight: 2500kg

Capacity: 6.7KW

Bottle Air Blow Drier

This machine is used for drying the residual water and spray on the bottle, to facilitate later sleeving label and spray-code. It is an indispensable equipment in pure water production line

TECHNICAL PARAMETERS:

MODEL	CG-1
Air knife material	304L Stainless steel
POWER	380V/50HZ three-phase
Vortex fan power	5.5KW
DIMENSION(mm)	1000*750*1570mm
WEIGHT	90kg



Part Four: Automatic Sleeve Labeling Machine

Sequence	Product Name	Amount	Unit
1	LT-150B Type Trapping Label Machine	1	set
2	LT-2000 Steam Heating Shrinking Oven	1	set
3	LT-18KW Steam Generator	1	set
4	Conveyor	7	meter

1. Features:

This serial of equipments serves in full auto smart packaging line integrating the functions of delivering bottles, classifying bottles, label sleeving and label shrinking. High speed, precise positioning, saving labor and perfect package are the design tenet of this serial of equipments.

1) Unique cutter head around China, suitable to $\varnothing 30\text{mm} \sim \varnothing 130\text{mm}$ containers, the cutter head is completely free of replacement and adjustment, unique touch man-machine interface, namely automatic positioning after searching out origin which is safe and convenient, and is leading the like products.

2) Label feeding part: dynamic-force synchronous tension controls label feeding, feeding capability: 90m/min., volume label feeding tray: \varnothing 500mm, applicable internal diameter of paper tube: 4', 8', 10', stable tension of label feeding part ensures the precise of the length of label, stable and fast feeding, and the precise of delivering label and casting label.

3) Special hot-wind shrinking oven: High-pressure blower, special hot wind circulating flue helps save energy. The shrinking effect is unmatched, flatten shrinking effect over curve bottles, traditional shrinking ovens are unsatisfactory in shrinking over curve bottles.

Technical Parameters:

1. LT-150B Technical Parameters:

Input Power	3.0KW
Input Voltage	Single phase/220V AC
Production Efficiency	150 bottles/min
Size of Host Machine	2100L×850W×2000H
Applicable Diameter of Bottle Body	35mm~95mm
Applicable Length of Label	30mm~250mm
Applicable Thickness of Label	0.03mm~0.13mm



2. LT-2000 Steam Heating Shrinking Oven

Input Power Supply of Blower	1, 220VAC 0.75KW
Input Power Supply of Steam Generator	380V/50HZ
Working Pressure	≤ 0.1 Mpa
Weight	230Kg
Steam Consumption	10-20Kg/h
Size of Oven Body	1800L×400W×450H
Transporting Speed	0-35m/min



3. LT-18KW Steam Generator

Input power of heater: 18KW

Voltage: 380V

Air pressure :0.4~0.7Mpa

Steam volume :3.8~22.8kg/h

Water Container Volume :28L

Dimension:630*560*1360(mm/mm/mm)



4. Conveyor



Material: Engineering Plastic-Steel

Configuration List

Item	Model	Qty(set)	Brand	Origin
PLC	FPX-C60T	1	Panasonic	Japan
Tough Screen	MT6070IH	1	Willen	Taiwan
High-speed fiber-optic sensors	FX-301	1	SUNX	Japan
Photoelectric sensor	CX-421	1	SUNX	Japan
Photoelectric sensor	CX-442	1	SUNX	Japan
Photoelectric sensor	PM-L44	2	SUNX	Japan
Label dosing actuating motor	MHMD082P1U(400W)	1	Panasonic	Japan
Label dosing Servo Driver	MCDDT3520053 (400W)	1	Panasonic	Japan
Cutter actuating motor	MHMD042P1U(400W)	1	Panasonic	Japan
Cutter Servo Driver	MBDDT2210003 (400W)	1	Panasonic	Japan
Bottle Separating AC motor	5IK90GN-YF-5GN7.5K	1	TWT	Taiwan

Bottle Separating transducer	BFV00022DK	1	Panasonic	Japan
Bottle Conveying AC motor	5IK90GN-YFT-5GN15K	1	TWT	Taiwan
Bottle Conveying transducer	BFV00022DK	1	Panasonic	Japan
Gear motor	RV50-20-0.75KW	1	TWT	Taiwan
Conveying transducer	BFV00072GK	1	Panasonic	Japan
Label dosing motor	RV50-15K-180	1	TWT	Taiwan
Label dosing transducer	BFV00022DK	1	Panasonic	Japan
Lifting motor	5IK90GU-CF-5GU30KB	1	TWT	Taiwan
Labeling dosing motor 2	5IK120A-CFT	1	TWT	Taiwan
Brushing motor	4IK25GN-CF-4GN3K	2	TWT	Taiwan
Draught fan motor	RV50-0.75KW-20A	1	TWT	Taiwan
Switch	XB2-BD21	1	Schneider	France
Switch power source	S-50-24	1	MW	Taiwan
AC Connector	LC1-D1810M5C	2	Schneider	France
Disconnecter	D20 2P	1	Schneider	France
Extractor fan	SF11025AT	2	Luann	Shanghai
Three color indicator	LTA-205WJ	1	Shanghai	Shanghai
Socket	10A-220V	1	Shanghai	Shanghai
Single Relay	MY2NJ24VDC	5	Omron	Japan

Pictures:





Part Five: D5300 Laser Marking Machine



1. Machine Introduction

5300/5303 CO₂ laser marking system is the newest product from Guangzhou Sunine laser Technology Co.Ltd. It's specially designed for the industrial product packing. It is the best succedaneum of the ink-jet printer system. The product own the following advantages:

- * Small in size with the integrated touch screen
- * High speed flying marking system

- * Raster font, vector font for choosing
- * No limiting characters in the working area
- * Economical and low maintenance cost

We import advanced foreign technical and parts to keep the machine's competitiveness. Such as generating laser and the lens, which can meet almost marking need. The machine is small size so it takes small space. Widely used in food& beverage ,medicine cosmetics industry and garment industry.



2. Technical Parameter

This machine is made of generator laser, lens, photoelectric sensor, main controller board and power.

5300/5303 can marking under flying status, and can count it when working. Raster font, vector font for choosing. Can non-stopping working for 24 hours.

Item	Model	CO2 5300
Machine general machine	Machine material	Aluminum structures
	Generator laser	Enclosed metal for CO2 laser generator
	Output power	≥30W
	Laser wave length	10.6um/9.3um
	Lens	High precision 2 dimensional scanning system
	Marking speed	≤7000mm/s
	Main control system	Highly integrated motherboard, embedded 7 inch screen
	Operating system	WIN CE
	Cooling system	wind
	Focus zoom lens	focal length 130mm
	Marking line type	Raster font, vector font for choosing

Laser marking parameter	Min.line width	0.03mm
	Repeatability accuracy	0.01mm
	Working area	90mm×90mm or other
	Positioning	Red light positioning and focusing
	Lines of marking	No limited in working area
	Speed	0~100m/min (depends on the material)
Supporting language	Fonts	Chinese and English, Numbers, such as traditional Chinese standard repertoire
	File	BMP/DXF/HPGL/JPEG/PLT
	Code	CODE39、CODE128、CODE126、QR
Other	Power	220V
	Power Consumption	900W
	Net weight	25kg
	Size	730mmX137mmX192mm
Working environment		The external temperature 0 °C - 45 °C; Humidity of 95% or less; The condensation; No vibration

◆Standards:

GB 7247-87	Classification of laser radiation safety of the product, equipment needs and user guide
GB10320-88	The electrical safety of laser equipment and facilities
ISO 9000-3	International standard software
GB/T12123-89	Designing procedure for selling packages
IEC 536	The classification of electrical and electronic equipment protection against electric shock

3. Main Configuration Parts list

No.	Second system name	Parts name	Type	QUA./pc	Origin
1	Laser marking head	lens	1064-3	1	US
		High speed scanning lens		1	Germany
		lens	NJ-110	1	US
		Generator laser	Generator laser	30W	1
3	Red light positioning			1	

	system				
4	Computer and software control system	7 inch touch screen		1	
		Marking soft system			
5	Power	Power switch	S600-48W	1	Taiwan
6	Holder	X, Y holder		1	Sunine
7	optoelectronic switch	Photoelectric sensor		1	US

Part Six: Automatic Shrink Wrapping Packing Machine

1. Scope of Application:

Auto shrink- wrapping machine series are suitable for the package of bottled water ,beverage、 household、 electric appliances、 electrical units、 floor boards、 pottery and so on.

2. Feature:

- 1) It can make package perfect whatever it is without pallet, cartoon, rectangle, round or flat shape.
- 2) It has the advantage of less cost and better appearance.
- 3) Replace film conveniently. It has failure alarm, lock device, reliable running.
- 4) Automatic film feeding and cutting function, and the length of film for feeding and cutting is adjustable.
- 5) Feeding conveyer with frequency transducer control system for ensure reliable feeding.
- 6) With stainless steel heating tube to ensure the high efficiency even heat, not easy to break and easy changing.
- 7) The whole machine applies super steel and stainless steel, with compact and durable structure. This new type of wrapping machine is the ideal equipment for beverage filling line.

2. Technical Diameter:

Machine Dimension	5950×4500×1800mm (L*W*H.mm)
Max packed size	600*400*350(L*W*H.mm)
Shrinkage film material	PE、 PP、 PVC、 POF
Shrinkage film thickness	0.03-0.15(mm)
Oven temperature	160 - 250°C
Max output	5-8Bag/Min.
Actual Power	15Kw/H.
Max power consumption	24KW
Voltage	AC 380V/220V,3Phs
Weight	900kg.
Applicable Internal Diameter of Paper Tube	5"~10".

4. Components List:

1. Automatic Film Mantling & Cutting Machine		
Item	Mole	Qty
Driving motor	YS5624;90w;220/380;50Hz	2
Gearing head	56B14;RV30;i=10	2
Cylinder	SC63×400	1
Double Shaft Cylinder	TN-φ20×30	1
Heating tube	φ11;L=650mm	1
Filters Rugulators lubricators	GL300-10	1
Timer	JSS48A	3
Temperature Controller	REX-C100	1
pilot light	AD Series	2
Starting switch	LA Series	4
Power Switch	2.1A/24V	1
Electric Relay	MY4NJ;24VDC ; OMRON	5
Solid State Relay	SSR-40DA	1
Proximity Switch	SC1204-N	3
Residual Current Circuit Breaker	C65L-32/4P	2
Pneumatic valve	4V210-08 Airtac	3
Fuse Holder	3A 8A	2
2. Automatic Heat Shinking Machine		
Driving motor	German Join Venture BEIDE motor	1
Turbine Gearbox	WPS60-60A	1
Heating tube	φ 16*1305 (1200W)	12
Transducer	750w	1
Temperature Controller	REX-C100	1
pilot light	AD Series	1
Starting switch	LA Series	5
Residual Current Circuit Breaker	380V/63A	1
Fuse Base	RT18-32	2
AC contactor	4010/220V;1210/220V	4
Cooling fan	220V,50w	4
Intermediate relay	MY2NJ-220/AC	2

5 Packing Type:

- a)300-600ml:Big package: 4×6, 4×5;Small package: 3×4, 3×5.
b) 700-2000ml:Big package: 3×3, 3×4;Small package: 2×2, 2×3.

6. Picture:

